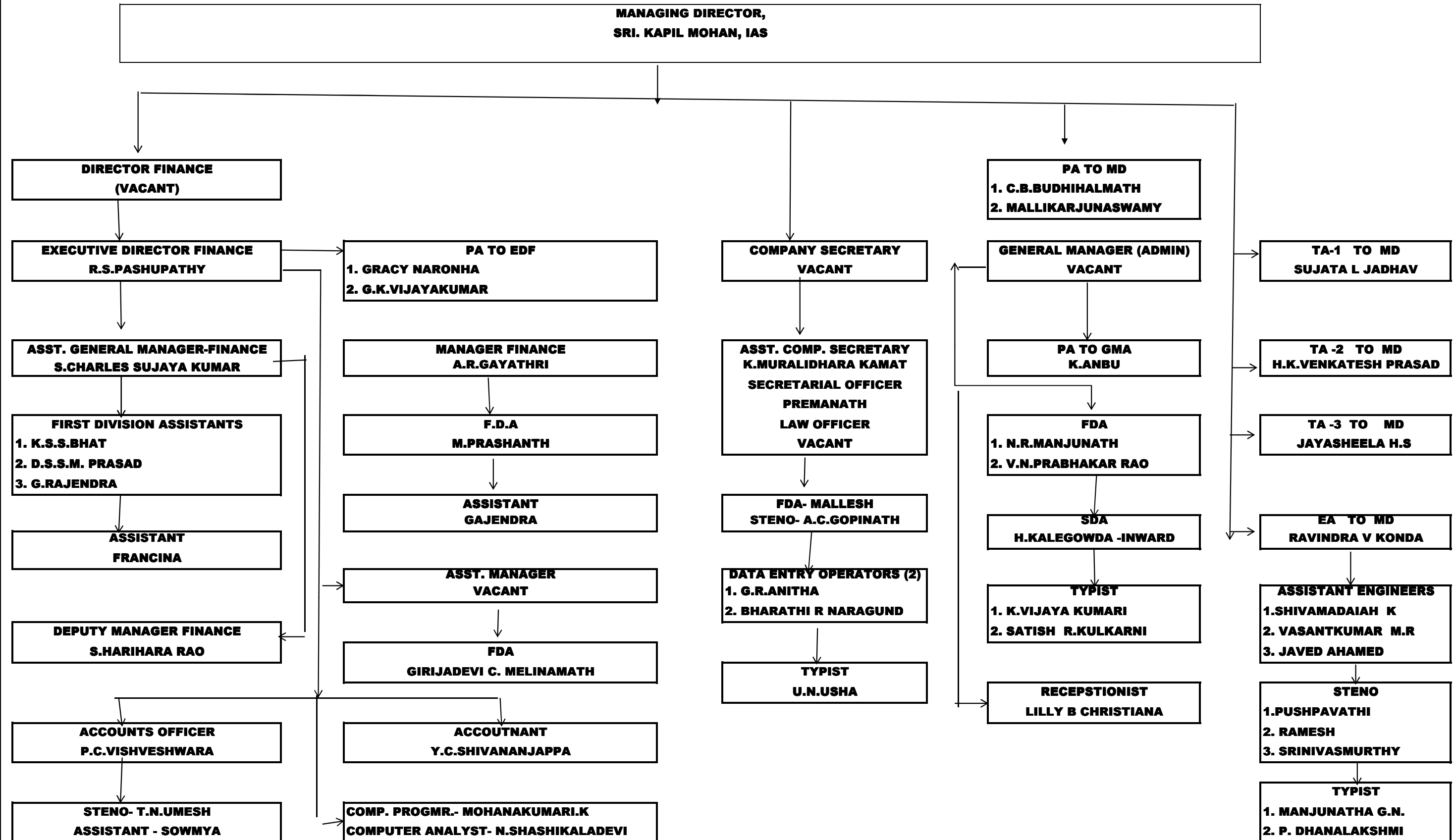
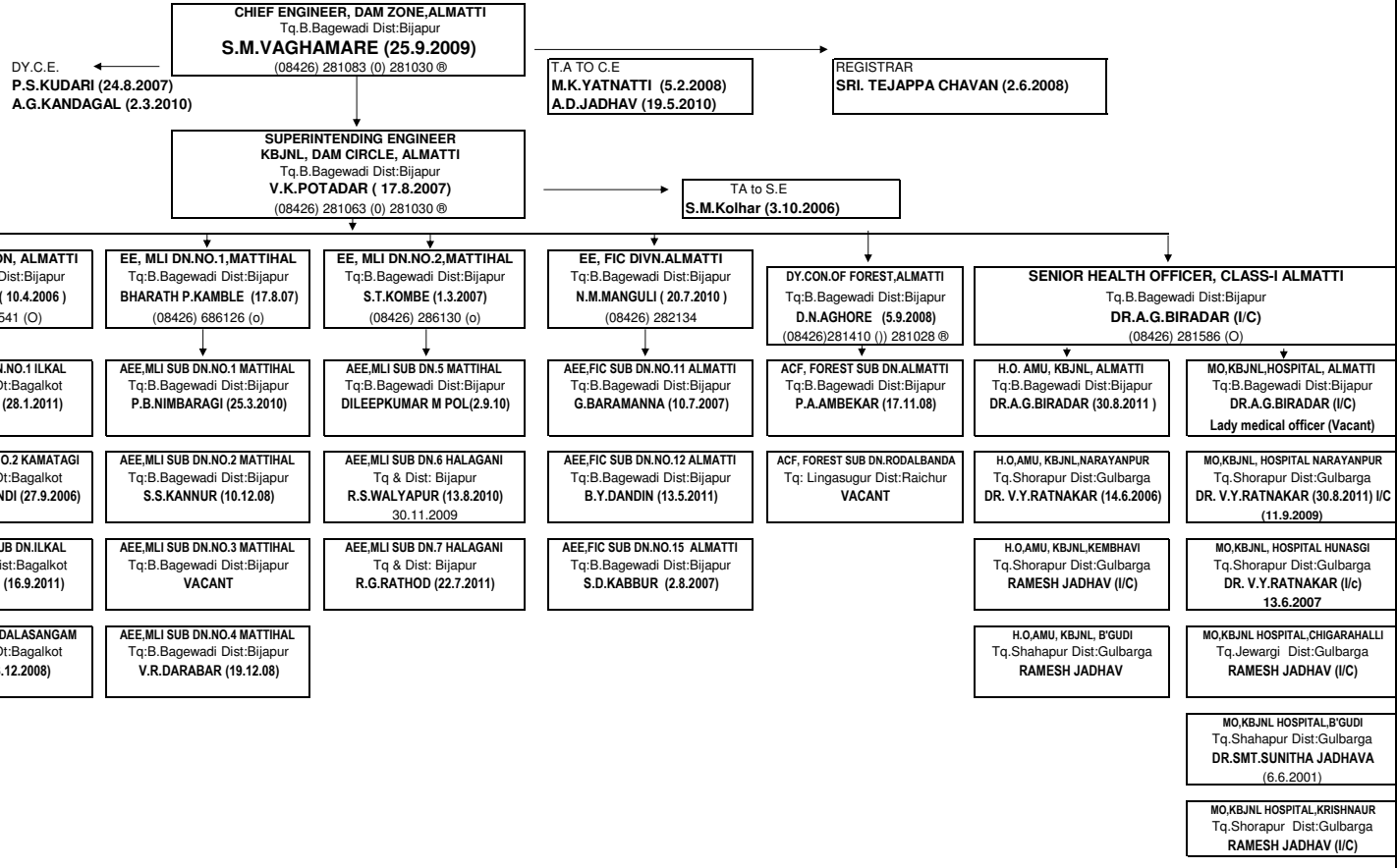


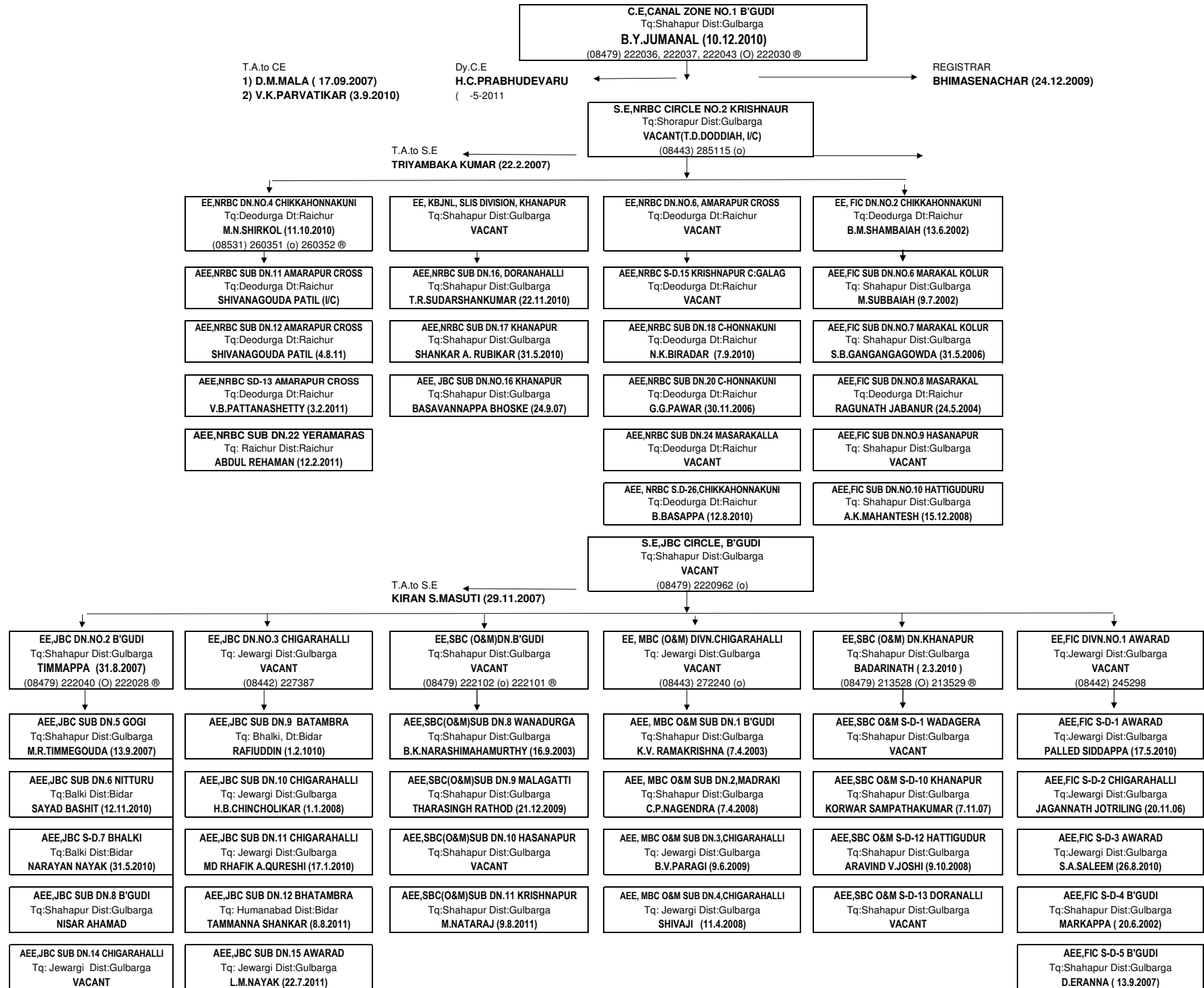
**ORGANISATION CHART IN RESPECT OF MANAGING DIRECTOR,
KRISHNA BHAGYA JALA NIGAM LIMITED, REGISTERED OFFICE, BANGALORE**



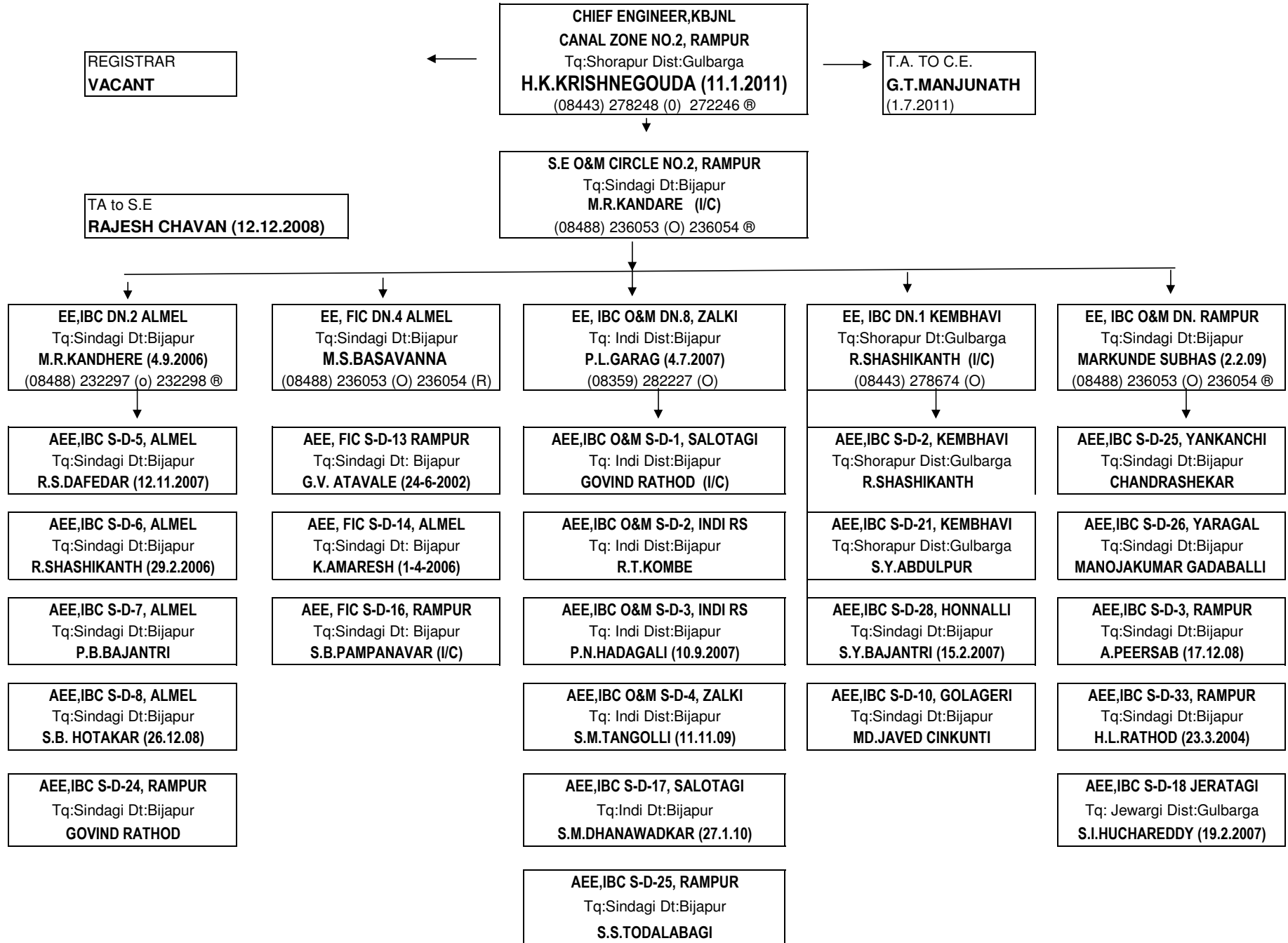
ORGANISATION CHART OF KBJNL, DAM ZONE, ALMATTI



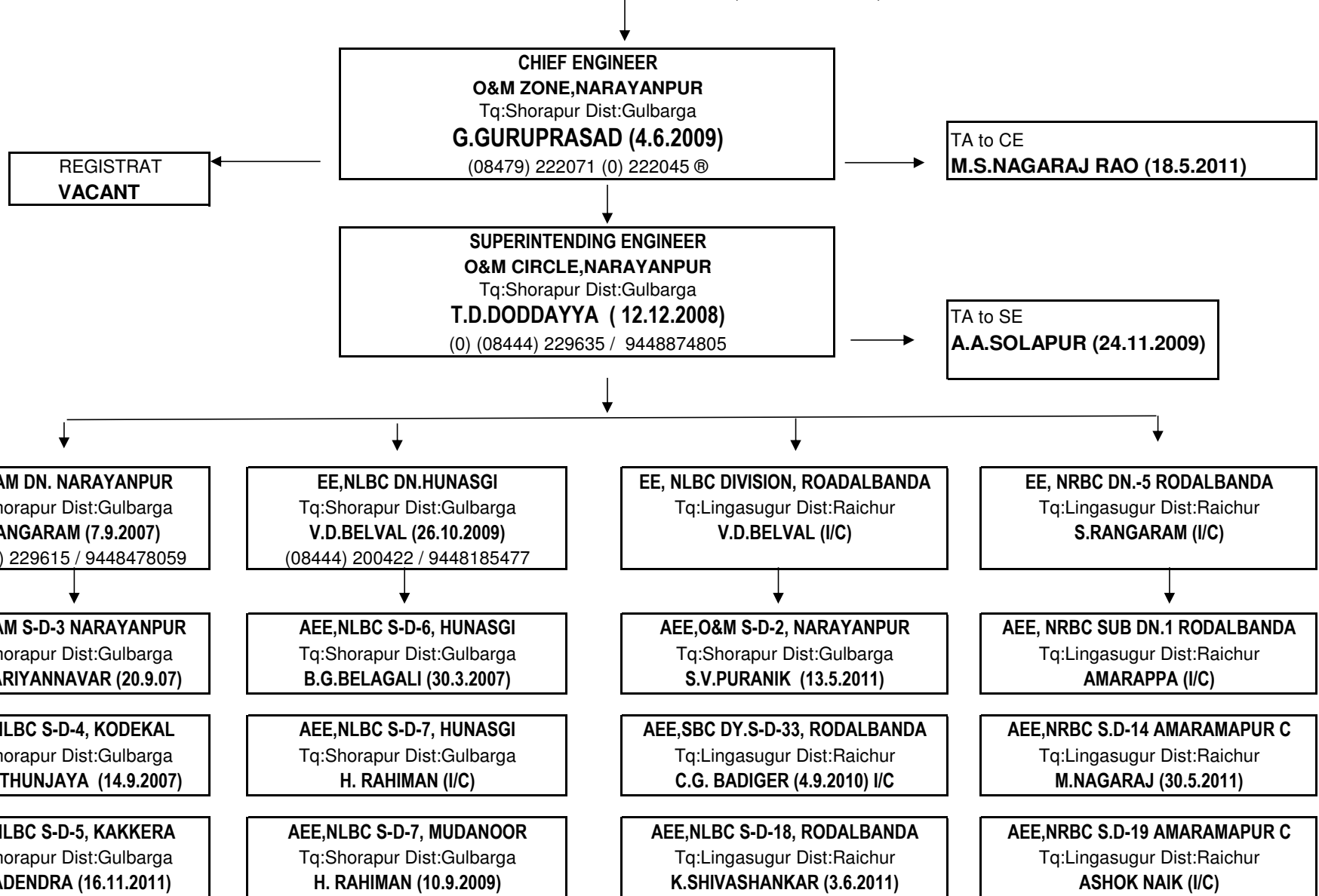
ORGANISATION CHART OF CANAL ZONE NO.1, BHEEMARAYANAGUDI



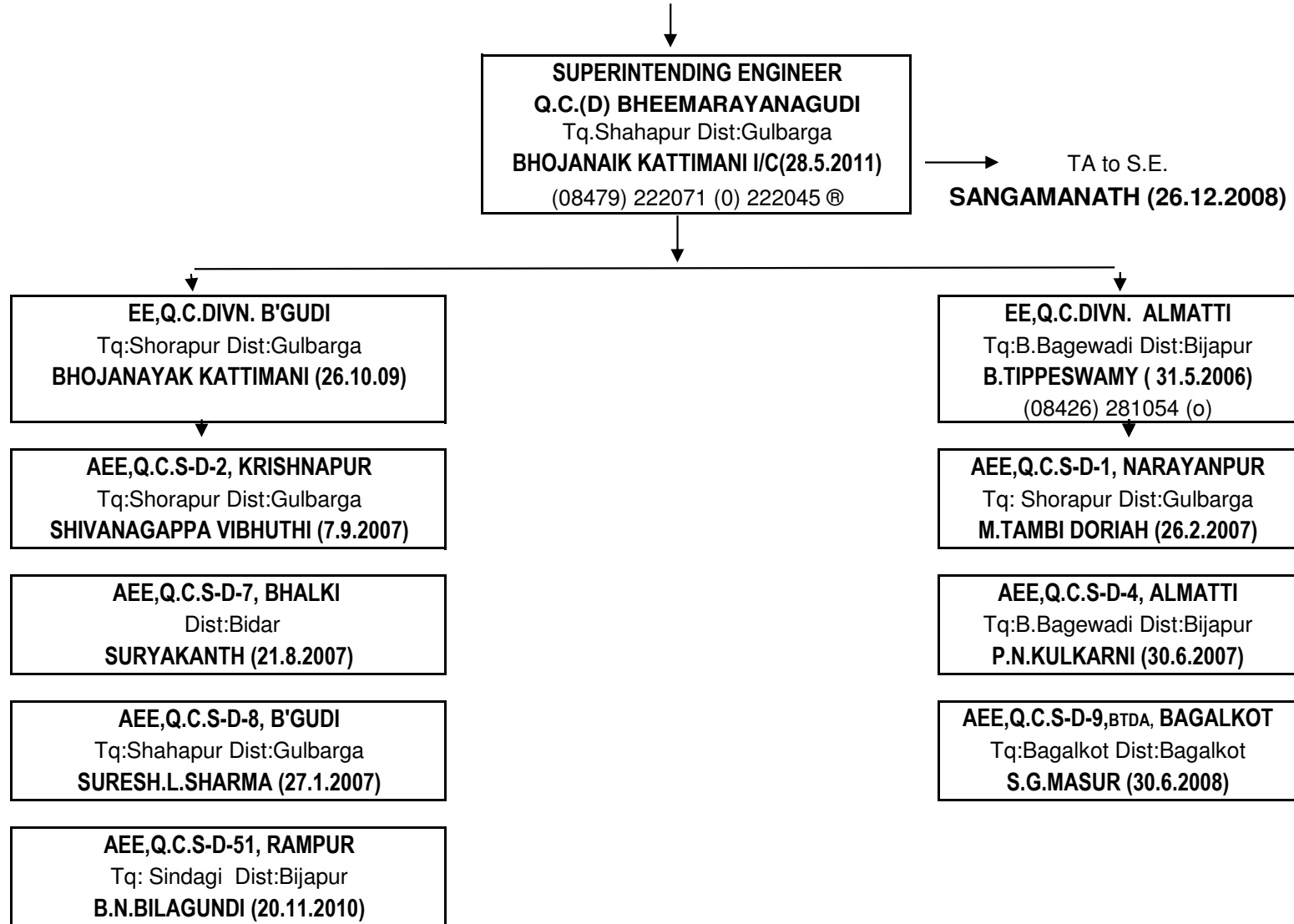
ORGANISATION CHART OF CHIEF ENGINEER, KBJNL, CANAL ZONE NO.2, KEMBHAVI



ORGANISATION CHART OF CHIEF ENGINEER, O&M ZONE, NARAYANPUR



ORGANISATION CHART OF SUPERINTENDING ENGINEER, QUALITY CONTROL (D) BHEEMARAYANAGUDI



**ORGANISATION CHART IN RESPECT OF MANAGING DIRECTOR,
KRISHNA BHAGYA JALA NIGAM LIMITED, ALMATTI/ BANGALORE
AS ON 21-9-2011**

MANAGING DIRECTOR,
KRISHNA BHAGYA JALA NIGAM LIMITED
ALMATTI/ BANGALORE
KAPIL MOHAN IAS (30.8.2011 AN)
BANGALORE: 22244484, 22277393, 22277488, FAX: 080-22219470/ ALMATTI:(08426) 281022, 281021, 281060 (O) 281041 ©

ADMINISTRATION OFFICE, ALMATTI

GENERAL MANAGER (ADMN)
S.R.GOPAL (I/C)

TA TO MD, KBJNL
1) H.K.VENKATESH PRASAD
2) SMT. SUJATHA L.JADHAV
3) HAHID AHMAD
4) A.B.DESHPANDE
5) S.S.DANARADDI

REGISTRAR TO M.D.
R.B.PATIL
08426-281060

ZONAL OFFICE

CE, DAM ZONE, ALMATTI
S.M.WAGHAMARE

CE, CANAL ZONE NO.1, BHEEMARAYANAGUDI
B.Y.JUMANAL

CE, CANAL ZONE NO.2, RAMPUR
H.K.KRISHNEGOUDA

CE, O&M ZONE, NARAYANPUR
G.GURUPRASAD

S.E, Q.C.(D) BHEEMARAYANAGUDI
BHOJANAIAK KATTIMANI I/C

REGISTERED OFFICE, BANGALORE

EXECUTIVE DIRECTOR FINANCE
R.S.PASHUPATHY,

P.C.A.O, ALMATTI
M.K.MURALIDHAR
08426-281043

C.A.O. B'GUDI
S.DIVAKAR
08479-222052

A.G.M. (F)
C.S.KUMAR

A.M. (R)
SMT.A.R.GAYATRI

COMPANY SECRETARY
VACANT