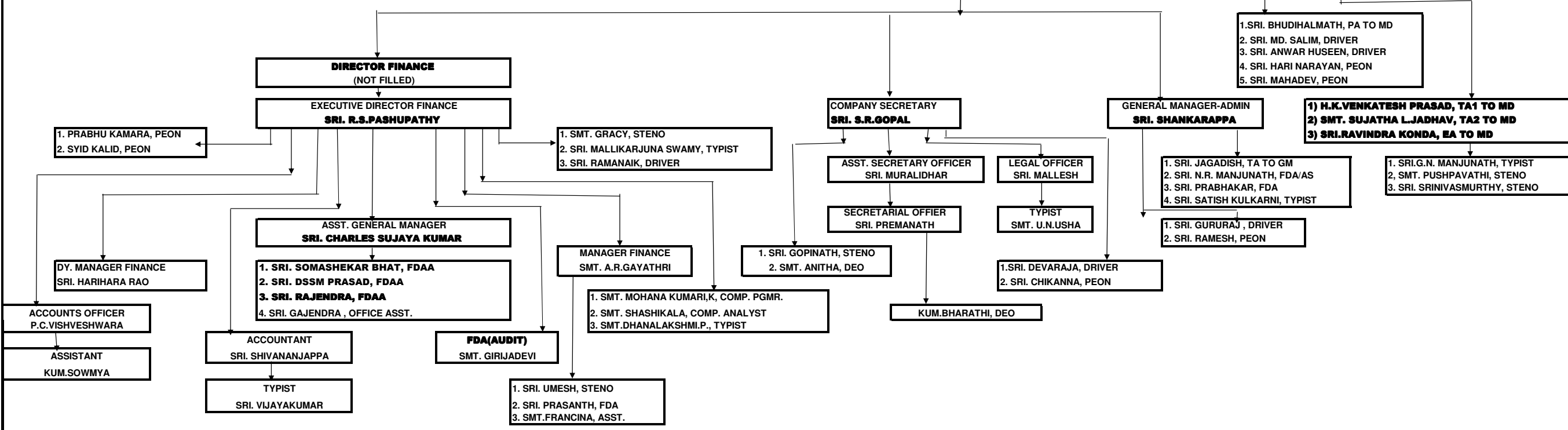
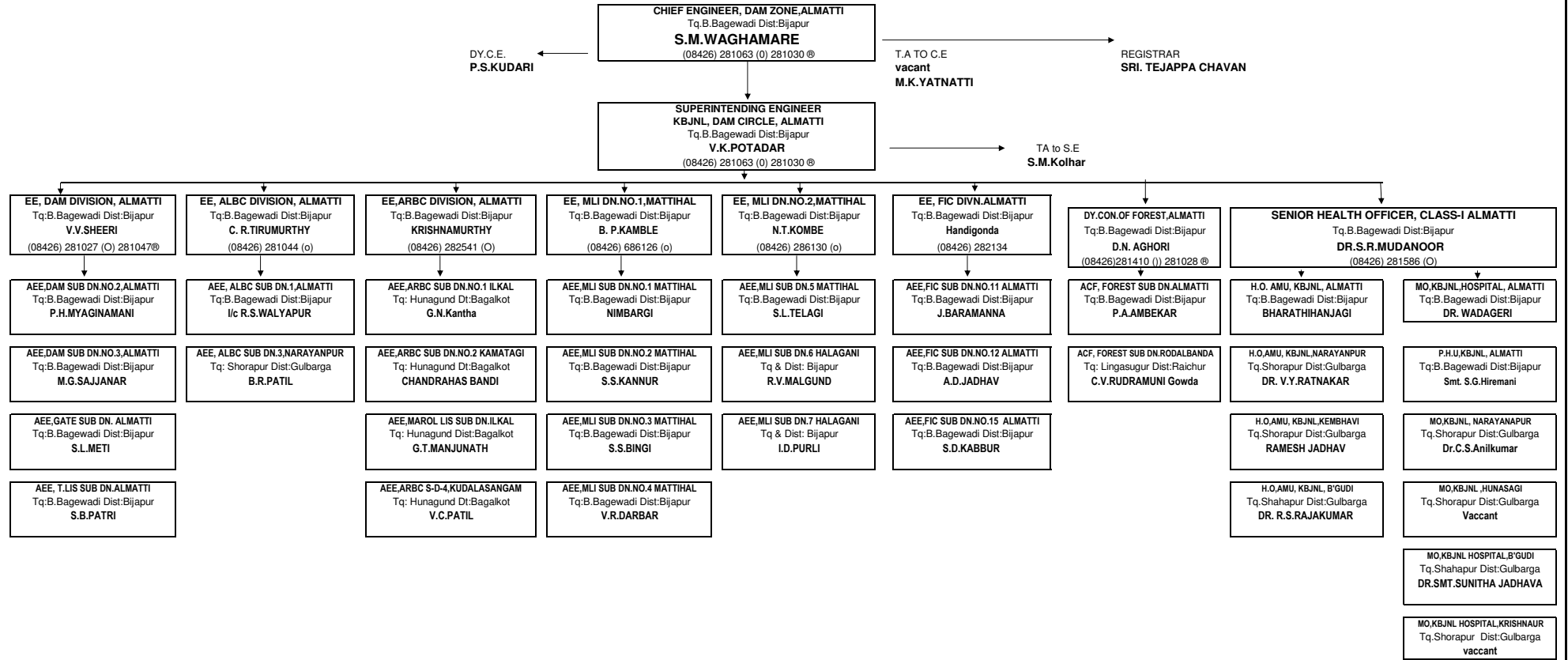


BOARD OF DIRECTORS

MANAGING DIRECTOR, KRISHNA BHAGYA JALA NIGAM LIMITED, ALMATTI/ BANGALORE
SRI. BASAVARAJ I.A.S. (9.7.2009)



ORGANISATION CHART OF KBJNL, DAM ZONE, ALMATTI



ORGANISATION CHART OF CANAL ZONE NO.1, BHEEMARAYANAGUDI

C.E,CANAL ZONE NO.1 B'GUDI
Tq:Shahapur Dist:Gulbarga
MAHESHWARAPPA
(08479) 222036, 222037, 222043 (O) 222030 ®

T.A.to CE
1) **D.M.MALA** (17.09.2007)
2) **N.V.MURALIDHAR** (20.1.2008)

Dy.C.E
M.S.BASAVANNA
(9.10.2006)

REGISTRAR
Bheemasenacharya

S.E,NRBC CIRCLE NO.2 KRISHNAUR
Tq:Shorapur Dist:Gulbarga
SHARANAPPA SULAGUNTAE
(08443) 285115 (o)

T.A.to S.E
TRIYAMBAKA KUMAR (22.2.2007)

REGISTRAR
Vacant

EE,NRBC DN.NO.4 CHIKKAHONNAKUNI
Tq:Deodurga Dt:Raichur
M.S.NAGARAJ
(08531) 260351 (o) 260352 ®

EE, KBJNL, S LIS DIVISION, KHANAPUR
Tq:Shahapur Dist:Gulbarga
A/c NARAYAN NAYAK

EE,NRBC DN.NO.6 AMARAPUR CROSS
Tq:Deodurga Dt:Raichur
MOHAMED HAFEEZ

EE, FIC DN.NO.2 CHIKKAHONNAKUNI
Tq:Deodurga Dt:Raichur
B.M.SHAMBAIAH

AEE,NRBC SUB DN.11 AMARAPUR CROSS
Tq:Deodurga Dt:Raichur
SHIVANAGOWDA PATIL

AEE,NRBC SUB DN.16, DORANAHALLI
Tq:Shahapur Dist:Gulbarga
KRISHNACHARYA

AEE,NRBC SUB DN.15 KRISHNAPUR
Tq:Deodurga Dt:Raichur
N.K.BIRADARA

AEE,FIC SUB DN.NO.6 DEODURGA
Tq: Shahapur Dist:Gulbarga
M.SUBBAIAH (9.7.2002)

AEE,NRBC SUB DN.12 AMARAPUR CROSS
Tq:Deodurga Dt:Raichur
TUKARAM D.CHAVAN

AEE,NRBC SUB DN.17 KRISHNAPUR
Tq:Shahapur Dist:Gulbarga
NARAYAN NAIK

AEE,NRBC SUB DN.18 C-HONNAKUNI
Tq:Deodurga Dt:Raichur
A/c BIRADAR

AEE,FIC SUB DN.NO.7 GOPALAPUR CROSS
Tq: Shahapur Dist:Gulbarga
S.B.GANGAGOWDA (31.5.2006)

AEE,NRBC SD-13 AMARAPUR CROSS
Tq:Deodurga Dt:Raichur
ASHOK R KALALA

AEE, JBC SUB DN.NO.16 KHANAPUR
Tq:Shahapur Dist:Gulbarga
B.BHOSKE

AEE,NRBC SUB DN.20 C-HONNAKUNI
Tq:Deodurga Dt:Raichur
G.G.PAWAR

AEE,FIC SUB DN.NO.8 MASARAKAL
Tq:Deodurga Dt:Raichur
RAGUNATH JABANUR (24.5.2004)

AEE,NRBC SUB DN.22 YERAMARAS
Tq: Raichur Dist:Raichur
A.K.ASHOKREDDY

AEE,NRBC SUB DN.24 MASARAKALL
Tq:Deodurga Dt:Raichur
K.SHIVASHANKAR

AEE,FIC SUB DN.NO.9 HASANAPUR
Tq: Shahapur Dist:Gulbarga
VACANT

AEE, NRBC S-D-26,CHIKKAHONNAKUNI
Tq:Deodurga Dt:Raichur
A/c N.K.BIRADAR

AEE,FIC SUB DN.NO.10 HATTIGUDURU
Tq: Shahapur Dist:Gulbarga
A.K.MAHENTESH

S.E,JBC CIRCLE, B'GUDI
Tq:Shahapur Dist:Gulbarga
A/C THIMMAPPA
(08479) 2220962 (o)

T.A.to S.E
KIRAN S.MASUTI (29.11.2007)

EE,JBC DN.NO.2 B'GUDI
Tq:Shahapur Dist:Gulbarga
TIMMAPPA
(08479) 222040 (O) 222028 ®

EE,JBC DN.NO.3 CHIGARAHALLI
Tq: Jewargi Dist:Gulbarga
B.V.HIREMATH
(08442) 227387

EE,SBC (O&M)DN.B'GUDI
Tq:Shahapur Dist:Gulbarga
THIMMAPPA I/C
(08479) 222102 (o) 222101 ®

EE,SBC (O&M) DIVN.CHIGARAHALLI
Tq: Jewargi Dist:Gulbarga
SHIVAJI A/C
(08443) 272240 (o)

EE,SBC (O&M) DN.KHANAPUR
Tq:Shahapur Dist:Gulbarga
SAMPATH KUMAR A/C
(08479) 213528 (O) 213529 ®

EE,FIC DIVN.NO.1 AWARAD
Tq:Jewargi Dist:Gulbarga
A/C SHIVAJI
(08442) 245298

AEE,JBC SUB DN.5 GOGI
Tq:Shahapur Dist:Gulbarga
M.R.TIMMEGOUDA

AEE,JBC SUB DN.9 BATAMBRA
Tq: Bhalki, Dt:Bidar
RAFFIDIN

AEE,SBC(O&M)SUB DN.8 WANADURGA
Tq:Shahapur Dist:Gulbarga
B.K.NARASHIMAHAMURTHY (16.9.2003)

AEE, MBC O&M SUB DN.1 B'GUDI
Tq:Shahapur Dist:Gulbarga
K.V. RAMAKRISHNA (7.4.2003)

AEE,SBC O&M S-D-1 WADAGERA
Tq:Shahapur Dist:Gulbarga
A/C SAMPATH KUMAR

AEE,FIC S-D-1 AWARAD
Tq:Jewargi Dist:Gulbarga
VACANT

AEE,JBC SUB DN.6 NITTURU
Tq:Balki Dist:Bidar
T.R.SUDARSHAN KUMAR

AEE,JBC SUB DN.10 CHIGARAHALLI
Tq: Jewargi Dist:Gulbarga
H.B.CHINCHOLIKAR (1.1.2008)

AEE,SBC(O&M)SUB DN.9 MALAGATTI
Tq:Shahapur Dist:Gulbarga
TARANATH SINGH RATHOD

AEE, MBC O&M SUB DN.2,MADRAKI
Tq:Shahapur Dist:Gulbarga
C.P.NAGENDRA (7.4.2006)

AEE,SBC O&M S-D-10 KHANAPUR
Tq:Shahapur Dist:Gulbarga
KORWAR SAMPATHAKUMAR (7.11.07)

AEE,FIC S-D-2 CHIGARAHALLI
Tq:Jewargi Dist:Gulbarga
JAGANNATH JOTRILING (20.11.06)

AEE,JBC S-D-7 BHALKI
Tq:Balki Dist:Bidar
SHANKAR RUBIKAR

AEE,JBC SUB DN.11 CHIGARAHALLI
Tq: Jewargi Dist:Gulbarga
S.D.MOMMAMED KURESHI

AEE,SBC(O&M)SUB DN.10 HASANAPUR
Tq:Shahapur Dist:Gulbarga
i/c shivashankar

AEE, MBC O&M SUB DN.3,CHIGARAHALLI
Tq: Jewargi Dist:Gulbarga
BASAPPA VEERAPPA PARGI

AEE,SBC O&M S-D-12 HATTIGUDUR
Tq:Shahapur Dist:Gulbarga
ARAVIND V.JOSHI (9.1.2008)

AEE,FIC S-D-3 AWARAD
Tq:Jewargi Dist:Gulbarga
S.M.MOINUDDIN (27.3.2007)

AEE,JBC SUB DN.8 B'GUDI
Tq:Shahapur Dist:Gulbarga
N.P.VENKATESH

AEE,JBC SUB DN.12 BHATAMBRA
Tq: Humanabad Dist:Bidar
VIJAYAKUMAR CHATURE (27.8.2007)

AEE,SBC(O&M)SUB DN.11 KRISHNAPUR
Tq:Shahapur Dist:Gulbarga
I/C BASAVARAJ WALLAPUR

AEE, MBC O&M SUB DN.4,CHIGARAHALLI
Tq: Jewargi Dist:Gulbarga
SHIVAJI

AEE,SBC O&M S-D-13 DORANALLI
Tq:Shahapur Dist:Gulbarga
S.C.PAKAREDDY (15.2.2007)

AEE,FIC S-D-4 B'GUDI
Tq:Shahapur Dist:Gulbarga
MARKAPPA (20.6.2002)

AEE,JBC SUB DN.14 CHIGARAHALLI
Tq: Jewargi Dist:Gulbarga
N.P.VENKATESH

AEE,JBC SUB DN.15 AWARAD
Tq: Jewargi Dist:Gulbarga
VIJAYAKUMAR C PANDRI

AEE,FIC S-D-5 B'GUDI
Tq:Shahapur Dist:Gulbarga
D.ERANNA (13.9.2007)

ORGANISATION CHART OF CHIEF ENGINEER, KBJNL, CANAL ZONE NO.2, KEMBHAVI

DEPUTY CHIEF ENGINEER
Post shifted to MD office Almatti

CHIEF ENGINEER, KBJNL
CANAL ZONE NO.2, KEMBHAVI
Tq:Shorapur Dist:Gulbarga
JAYAPRAKASH
(08443) 278248 (O) 272246 ®

T.A. TO C.E.
M.M.YADAGIR
(19.6.2006)

REGISTRAR
A/C SOMNATH REDDY

TA to S.E
RAJESH CHAWAN

S.E O&M CIRCLE NO.2, RAMPUR
Tq:Sindagi Dt:Bijapur
M.R.KHANDARE A/C
(08488) 236053 (O) 236054 ®

EE, IBC DN.2 ALMEL
Tq:Sindagi Dt:Bijapur
M.R.KANDHERE (4.9.2006)
(08488) 232297 (o) 232298 ®

EE, FIC DN.4 ALMEL
Tq:Sindagi Dt:Bijapur
M.RAJASHEKHAR (11-3-2005)
(08488) 236053 (O) 236054 (R)

EE, IBC O&M DN.8, ZALKI
Tq: Indi Dist:Bijapur
P.L.GARAG (4.7.2007)
(08359) 282227 (O)

EE, IBC DN.1 KEMBHAVI
Tq:Shorapur Dt:Gulbarga
VACANT A/C R.SHASHIKANT
(08443) 278674 (O)

EE, IBC O&M DN. RAMPUR
Tq:Sindagi Dt:Bijapur
MARAKUNDE SUBASH
(08488) 236053 (O) 236054 ®

AEE, IBC S-D-5, ALMEL
Tq:Sindagi Dt:Bijapur
R.S.DAFEDAR (12.11.2007)

AEE, FIC S-D-13 RAMPUR
Tq:Sindagi Dt: Bijapur
B.A. ATAVALE (24-6-2002)

AEE, IBC O&M S-D-1, SALOTAGI
Tq: Indi Dist:Bijapur
P.G.BAJANTRI

AEE, IBC S-D-2, KEMBHAVI
Tq:Shorapur Dist:Gulbarga
VACANT A/C R.SHASHIKANT

AEE, IBC S-D-25, YANKANCHI
Tq:Sindagi Dt:Bijapur
A/C S.I.HUCHAREDDY

AEE, IBC S-D-6, ALMEL
Tq:Sindagi Dt:Bijapur
R.SHASHIKANTH (29.6.2002)

AEE, FIC S-D-14, ALMEL
Tq:Sindagi Dt: Bijapur
K.AMARESH (1-4-2006)

AEE, IBC O&M S-D-2, INDI RS
Tq: Indi Dist:Bijapur
R.G.RATHOD (15.8.2007)

AEE, IBC S-D-21, KEMBHAVI
Tq:Shorapur Dist:Gulbarga
A/C S Y BAJANTHRI

AEE, IBC S-D-26, YARAGAL
Tq:Sindagi Dt:Bijapur
S.Y.CHALAWADI (15.7.2002)

AEE, IBC S-D-7, ALMEL
Tq:Sindagi Dt:Bijapur
B.R.RATHOD (13-9-06)

AEE, FIC S-D-16, RAMPUR
Tq:Sindagi Dt: Bijapur
GOVIND RATHOD

AEE, IBC O&M S-D-3, INDI RS
Tq: Indi Dist:Bijapur
P.N.HADAGALI (10.9.2007)

AEE, IBC S-D-28, HONNALLI
Tq:Sindagi Dt:Bijapur
S.Y.BAJANTRI (15.2.2007)

AEE, IBC S-D-3, RAMPUR
Tq:Sindagi Dt:Bijapur
PEERSAB

AEE, IBC S-D-8, ALMEL
Tq:Sindagi Dt:Bijapur
B.M.HOTKAR

AEE, IBC O&M S-D-4, ZALKI
Tq: Indi Dist:Bijapur
SURESH M GONGOLI

AEE, IBC S-D-10, GOLAGERI
Tq:Sindagi Dt:Bijapur
A/C S.I.HUCHAREDDY

AEE, IBC S-D-33, RAMPUR
Tq:Sindagi Dt:Bijapur
H.L.RATHOD (23.3.2004)

AEE, IBC S-D-24, RAMPUR
Tq:Sindagi Dt:Bijapur
VACANT

AEE, IBC S-D-17, SALOTAGI
Tq:Indi Dt:Bijapur
R.T.KOMBE (7.9.2007)

AEE, IBC S-D-18 JERATAGI
Tq: Jewargi Dist:Gulbarga
S.I.HUCHAREDDY (19.2.2007)

AEE, IBC S-D-25, RAMPUR
Tq:Sindagi Dt:Bijapur
D.M.POLE (2.11.2007)

G.Guruprasad
Chief Engineer
KBJNL, O&M Zone
Narayanpur
Office:- 08444-229653
Mobile:- 9845334650

T.D.Doddayya
Superintending Engineer
KBJNL, O&M Circle No.1
Narayanpur
Office:- 08444-229635
Mobile:- 9448874805

S.Rangaram
Executive Engineer
KBJNL, Dam Division
Narayanpur
Office:- 08444-229615
Mobile:- 9902023296

V.D.Belval
Executive Engineer
KBJNL, NLBC Division
Hunasagi
Office:- 08444-200422
Mobile:- 9448120634

H.S.Shankarappa
Executive Engineer
KBJNL, NLBC Division
Rodalbanda
Mobile:- 9448222394

S.Rangaram (I/C)
Executive Engineer
KBJNL, NRBC Division No.5
Rodalbanda
Mobile:- 9902023296

U.K. Kariyannavar
Asst.Executive Engineer
KBJNL, Dam S-D No.3
Narayanpur
Mobile:- 9945251778

B.G.Belagali
Asst.Executive Engineer
KBJNL, NLBC S-D No.6
Hunasagi
Mobile:- 9448266923

D.G.Jakkanatti(I/C)
Asst.Executive Engineer
KBJNL, O&M S-D No.2
Narayanpur
Mobile:- 9448910221

Amarappa (I/C)
Asst.Executive Engineer
KBJNL, NRBC S-D No.1
Rodalbanda
Mobile:- 9741802448

N.Mruthyanjaya
Asst.Executive Engineer
KBJNL, NLBC S-D No.4
Kodekal
Mobile:- 9880995153

B.G.Belagali (I/C)
Asst.Executive Engineer
KBJNL, NLBC S-D No.7
Mudnoor
Mobile:- 9448266923

B.N.Bilagundi
Asst.Executive Engineer
KBJNL, SBC S-D No.33
Rodalbanda
Mobile:- 9740373942

Ashok Naik(I/C)
Asst.Executive Engineer
KBJNL, NRBC S-D No.14
Amarapur Cross
Mobile:- 9972895353

K.Hiralal (I/C)
Asst.Executive Engineer
KBJNL, NLBC S-D No.5
Kakkera
Mobile:- 9900832905

A.Habibul Rehaman
Asst.Executive Engineer
KBJNL, NLBC S-D No.7
Hunasagi
Mobile:- 9448252007

Annappa
Asst.Executive Engineer
KBJNL, NLBC S-D No.18
Rodalbanda
Mobile:- 9945615962

Ashok Naik(I/C)
Asst.Executive Engineer
KBJNL, NRBC S-D No.19
Amarapur Cross
Mobile:- 9972895353

ORGANISATION CHART OF SUPERINTENDING ENGINEER, QUALITY CONTROL (D) BHEEMARAYANAGUDI

SUPERINTENDING ENGINEER
Q.C.(D) BHEEMARAYANAGUDI
Tq.Shahapur Dist:Gulbarga
BHOJANAİK KATTIMANI A/C
(08479) 222071 (0) 222045 ®

TA to S.E.
SANGAMANATHA

EE,Q.C.DIVN. B'GUDI
Tq:Shorapur Dist:Gulbarga
BHOJANAİK KATTIMANI

EE,Q.C.DIVN. ALMATTI
Tq:B.Bagewadi Dist:Bijapur
B.TIPPESWAMY
(08426) 281054 (o)

AEE,Q.C.S-D-2, KRISHNAPUR
Tq:Shorapur Dist:Gulbarga
SHIVANAGAPPA VIBHUTHI

AEE,Q.C.S-D-1, NARAYANPUR
Tq: Shorapur Dist:Gulbarga
M.TAMBI DORIAH

AEE,Q.C.S-D-7, BHALKI
Dist:Bidar
SURYAKANTH

AEE,Q.C.S-D-4, ALMATTI
Tq:B.Bagewadi Dist:Bijapur
P.N.KULKARNI

AEE,Q.C.S-D-8, B'GUDI
Tq:Shahapur Dist:Gulbarga
SHARMA L.SURESH

AEE,Q.C.S-D-9,BTDA, BAGALKOT
Tq:Bagalkot Dist:Bagalkot
S.G.MASUR

AEE,Q.C.S-D-51, RAMPUR
Tq: Sindagi Dist:Bijapur
VACANT

KRISHNA BHAGYA JALA NIGAM LIMITED ORGANISATION CHART**ABSTRACT AS ON 1.8.2008**

SI No.	Name of the Zone	Zonel office	Circle Office	Division Office	Sub Division Office	PCAO office	CAO office	Senior Helath office	Health office	Medical offices	Forest Division office	Forest Sub Divn. offices	Total
1	M.D.Office, Bangalore	1	0	0	0	1	1	0	0	0	0	0	3
2	M.D.Office, Almatti	1	0	0	0	0	0	0	0	0	0	0	1
3	Dam Zone, Almatti	1	1	6	20	0	0	1	4	6	1	2	42
4	Canal Zone No.1 B'gudi	1	2	10	44	0	0	0	0	0	0	0	57
5	Canal Zone No.2, Kembhavi	1	1	5	23	0	0	0	0	0	0	0	30
6	O&M Zone, Narayanpur	1	1	4	12	0	0	0	0	0	0	0	18
7	S.E. QC (D) B'gudi	0	1	2	7	0	0	0	0	0	0	0	10
	Total	6	6	27	106	1	1	1	4	6	1	2	161